



NEW PEUGEOT 3008 SUV



MOTION & EMOTION



PEUGEOT

STYLING

i-COCKPIT

TECHNOLOGY

SAFETY

INNOVATION

GT-LINE

ENGINE

SPECIFICATIONS



Welcome to the world of PEUGEOT, a world of innovative French manufacturing tradition. Our journey started over 200 years ago with a steel foundry producing a diverse range of products from coffee grinders to saws.

Our pursuit for innovation led to the production of our first motorised vehicle in 1889, the Serpollet-Peugeot – a steam-

powered three-wheeler. Our quest for perfection is what drives us, just as it did over 200 years ago.

All of our expertise gained through the years has led to this point, introducing the all-new PEUGEOT 3008 SUV, over 200 years in the making.

Please consult the specification sheet to determine feature availability on your choice of model. Specifications may change without prior notice.

 @PeugeotZA

 PeugeotSA

 PeugeotSA

#FeelPeugeot

#Peugeot3008SUV

www.peugeot.co.za

NEVER HAS AN SUV GONE SO FAR

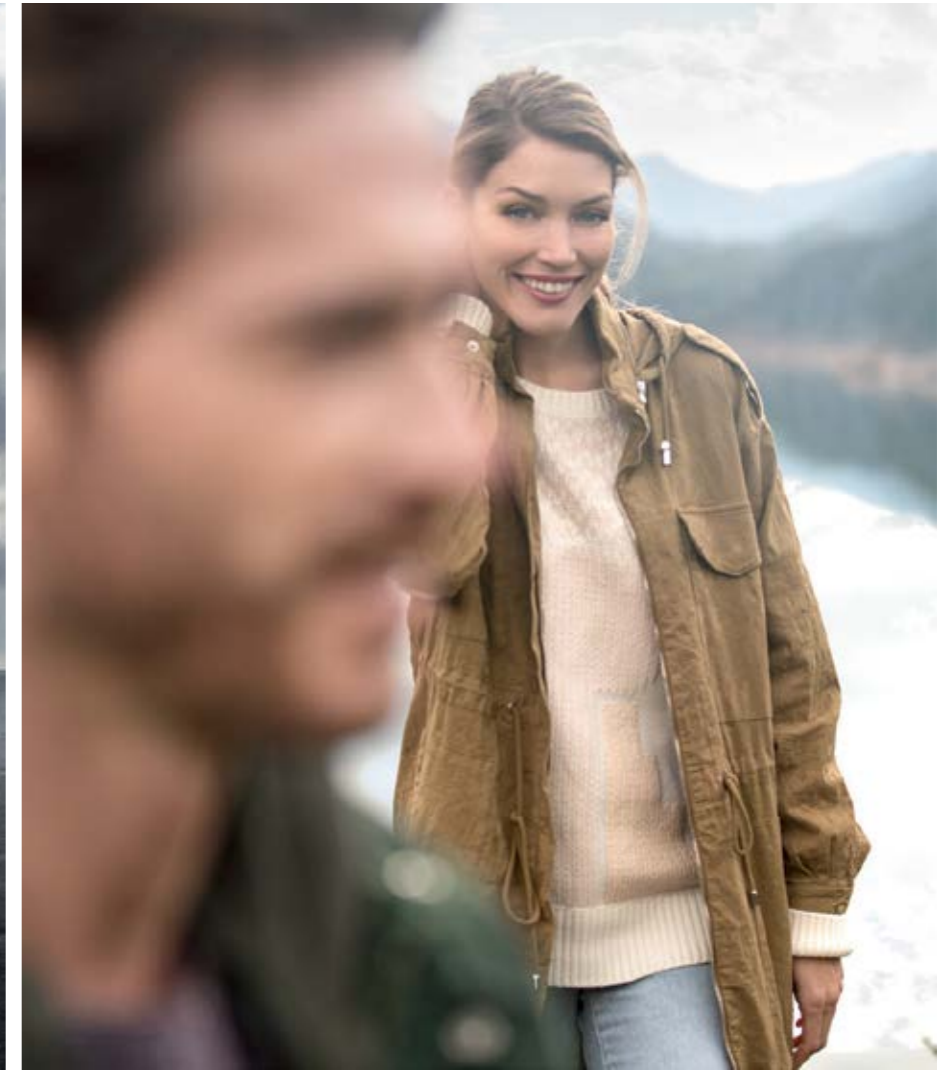




INSPIRED STYLE

Arrive in style with the all-new PEUGEOT 3008 SUV with an exterior providing the perfect balance of character and strength that makes an accomplished SUV. Discover the striking front end design featuring a prominent chrome grille flanked either side by signature headlights featuring LED daytime running light technology. Details, such as a raised horizontal bonnet and contrasting wheel arch extension trim, add to the SUV design. Go a step further with Allure versions and enjoy a front bumper adorned with a scuff plate finished in distinctive 'Lion Grey'.

Please consult the specification sheet to determine feature availability on your choice of model. Specifications may change without prior notice.



MAKE A STATEMENT

To stand back and admire the all-new PEUGEOT 3008 SUV allows the full appreciation of this striking SUV. With a purposeful stance and raised ride height the all-new PEUGEOT 3008 SUV makes its intentions clear. The impactful design

theme showcased at the front of the car continues in profile with a strong shoulder line that builds towards the rear and striking details such as the unique satin steel roof arch trim.



MADE FOR ADVENTURE

With the all-new PEUGEOT 3008 SUV, every journey will be an adventure no matter the distance. Whilst many an SUV are commandeered by urban explorers, if your destination is off the beaten track, the all-new PEUGEOT 3008 SUV will take it in its stride. The optional Advanced Grip Control® with Hill Assist Descent Control and its five driving modes will allow your journeys to continue, even off the tarmac.



THE STRIKING DESIGN CONTINUES

At the rear of the all-new PEUGEOT 3008 SUV, the design comes together beautifully. The striking front end design and strong shoulder in profile build to a perfectly balanced rear. Signature PEUGEOT design touches include 'Claw Effect' LED lights that flank the gloss black rear cluster connecting strip and a chrome rear bumper fascia to further enhance the design.

CONQUER THE OPEN ROAD





AMPLIFIED EMOTIONS

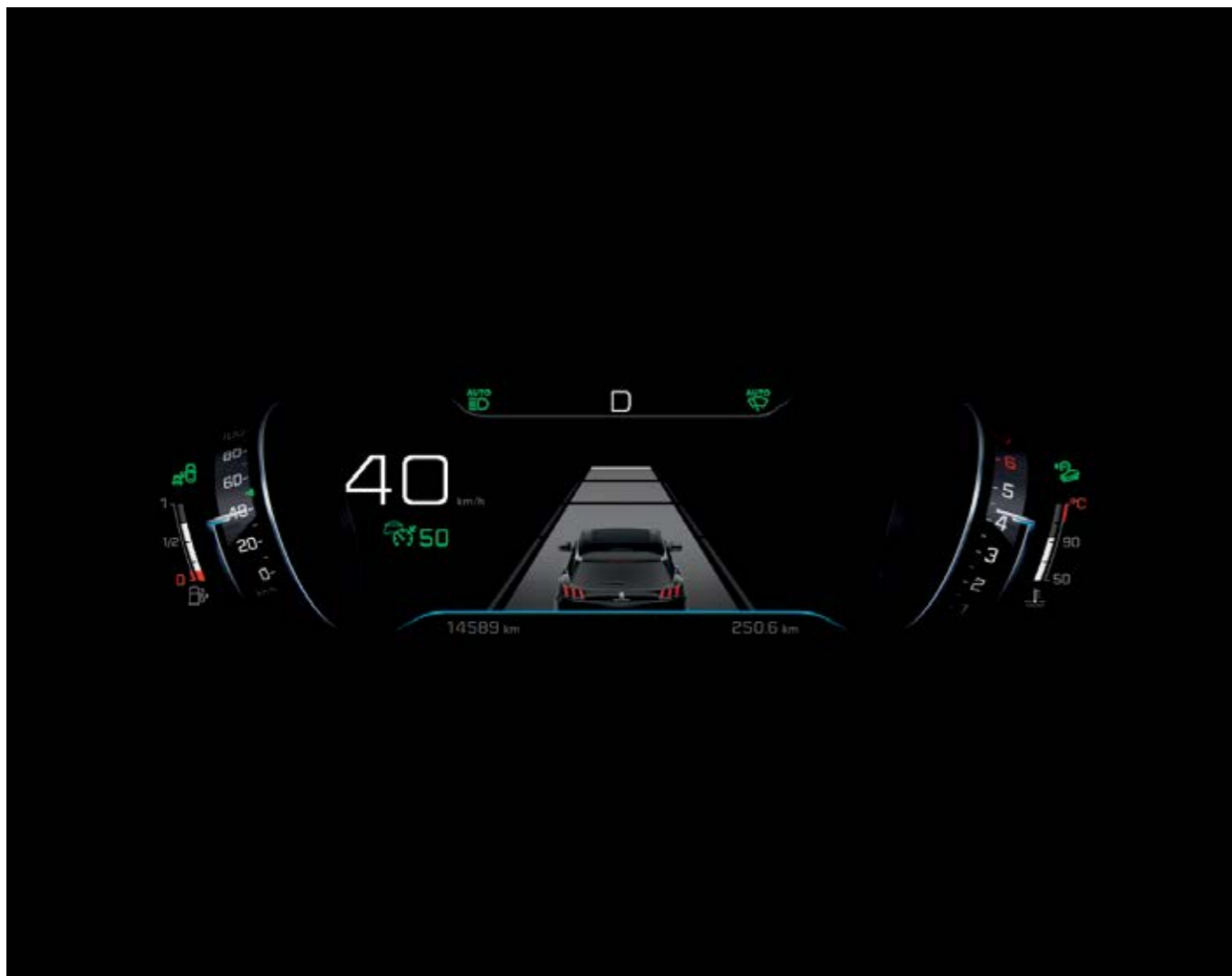
Increase your senses tenfold on board the all-new PEUGEOT 3008 SUV. With its spectacular new PEUGEOT i-Cockpit®, the all-new PEUGEOT 3008 SUV invites you to explore a 100% digital world. The 8.0" capacitive touchscreen with smart phone levels of responsiveness, configurable 12.3" head-up digital instrument panel which can be personalised to suit the drivers needs and the compact sports steering wheel with integrated controls are guaranteed to enhance your driving experience. To accompany the new PEUGEOT i-Cockpit®, versions equipped with an Efficient Automatic Transmission (EAT6) are operated by the stylish electric impulse control.

Please consult the specification sheet to determine feature availability on your choice of model. Specifications may change without prior notice.



A TOUCH OF PERFECTION

Every detail of the new PEUGEOT i-Cockpit® has been designed meticulously, from the full-grain leather trimmed steering wheel to the soft touch 'Brumeo' fabric that adorns the door cards and dashboard fascia, no detail has been overlooked. To complement the 8.0" capacitive touchscreen satin chrome toggle switches, inspired by the world of aviation, provide a unique touch to the striking cockpit design. With perfect weighting and damping, each switch is a work of art.



HIGH-DEFINITION DRIVE

Welcome the 21st Century, taking your seat behind the wheel in the all-new PEUGEOT 3008 SUV, allows you to fully appreciate the configurable 12.3" head-up digital instrument panel. Featuring crisp graphics, this large display can be customised to provide a variety of display modes. Modes include a traditional 'dials' selection, similar to the traditional analogue style. Other modes include the 'Driving' selection as shown above, whereby driver assistance information takes centre stage allowing the dials to take on a 'roller' appearance. In addition a further 3 modes are available, 'Personal', 'Minimal' and 'Navigation'*.

Please consult the specification sheet to determine feature availability on your choice of model. Specifications may change without prior notice.



A COMMANDING VIEW

With its raised ride height the all-new PEUGEOT 3008 SUV will give you a commanding view of the road ahead from the comfort of the new PEUGEOT i-Cockpit®. Designed with the driver in mind, it's the small details that make the biggest difference. Take the compact sports steering wheel, low set to reduce arm fatigue whilst the dimensions heighten the sense of agility in the bends. To add to the 'cockpit' design the touchscreen and toggle switches have been angled towards the driver whilst the configurable 12.3" head-up digital instrument panel is positioned above the steering wheel, closer to the road reducing the distance your eyes travel to view key information.



AMPLIFIED EXPERIENCE

SIT BACK AND DELIGHT YOUR SENSES

Journeys will never be the same again, with the all-new PEUGEOT 3008 SUV immersing you in true luxury. Enjoy a relaxing driver seat multipoint massage* with five massage types conducted through eight-pocket pneumatic technology. Experience more of the world outside with the opening panoramic glass roof* complete with mood lighting.



Please consult the specification sheet to determine feature availability on your choice of model.
Specifications may change without prior notice.



MIRROR SCREEN® FUNCTIONALITY

To ensure seamless compatibility between your smartphone and all-new PEUGEOT 3008 SUV every model benefits from Mirror Screen® functionality. Mirror Screen® encompasses Apple CarPlay™, MirrorLink® and Android Auto* technologies. With a compatible device you will be able to enjoy key features from your smartphone mirrored onto the 8.0" capacitive touchscreen. In addition to charging via USB, a smartphone charging plate** is available on some models to allow wireless inductive charging on the move.

* Android Auto. The Mirror Screen® function operates, as appropriate, via MirrorLink® technology (for MirrorLink®-compatible Android, Blackberry and Windows phones), via Apple CarPlay™ (for iOS phones) or via Android Auto (for Android phones) subject to holding a telephone subscription including Internet access with the user's operator. For more information, visit peugeot.co.za for more details. ** See specification sheet for model availability - Induction charging for devices compatible with the Qi standard. Please consult the specification sheet to determine feature availability on your choice of model. Specifications may change without prior notice.



3D CONNECTED NAVIGATION

Navigating has never been easier thanks to the new 3D Connected Navigation system available on the all-new PEUGEOT 3008 SUV. The navigation display can be viewed either on the 8.0" touchscreen or 12.3" head-up digital instrument panel. Using a live feed, the events essential to driving (traffic, weather, parking, service stations) are displayed in real time using TomTom® service connectivity. In addition the system also includes full postcode lookup and voice recognition to allow for the input of address details.



ADVANCED GRIP CONTROL*

With its compact sports steering wheel, the all-new PEUGEOT 3008 SUV has the agility for every day commuting, when the terrain gets a bit tougher however, the all-new PEUGEOT 3008 SUV has the perfect solution in the form of Advanced Grip Control®*. With one action on the thumb wheel on the centre console, your grip mode adapts instantly to the most difficult conditions. With some of the five settings on offer, including Mud, Sand and Snow, Advanced Grip Control® provides the perfect alternative to the more traditional 4x4 systems which often add more weight to a vehicle reducing the overall efficiency.

Please consult the specification sheet to determine feature availability on your choice of model. Specifications may change without prior notice.

HILL ASSIST DESCENT CONTROL

Designed to assist with the descent of steep slopes, Hill Assist Descent Control is incorporated as part of the Advanced Grip Control® system. When descending a slope with a gradient of more than 5% and with vehicle speed below 30km/h the system will work to reduce the risk of slipping. During a descent the system maintains speed and brake control, allowing the driver to concentrate on the vehicle's path of travel during the manoeuvre. A clever feature incorporated within the Hill Assist Descent Control system is our unique 'Clutch Mode' security function. Selecting this function for very steep slopes regulates the vehicle speed to 3km/h, this allows the vehicle to creep down a steep slope in a completely controlled manner.



THE PINNACLE OF SAFETY

SAFETY

Please consult the specification sheet to determine feature availability on your choice of model. Specifications may change without prior notice.



ALWAYS GOT YOUR BACK

Featuring outstanding levels of standard safety equipment and driver assistance systems, the all-new PEUGEOT 3008 SUV will provide optimum safety for you and those dearest to you. Every all-new PEUGEOT 3008 SUV enjoys three sets of Isofix mounting points, six airbags including a full length curtain and tyre pressure sensors. In addition to assist the driver, driver attention alert, lane departure warning and a traffic sign recognition and recommendation system also feature as standard.

In recognition of this, the all-new Peugeot 3008 SUV was awarded a five star rating - the highest rating possible - from Euro NCAP, the most widely-recognised independent vehicle safety assessor in Europe, following extensive and rigorous crash testing.

ADVANCED DRIVER ASSISTANCE SYSTEMS

Featuring class-leading levels of advanced driver assistance systems, the all-new PEUGEOT 3008 SUV benefits from a host of systems designed to assist the driver on the open road. These systems include Active Blind Spot Detection which alerts the driver to an obstacle via an LED light in the mirrors as well as applying a trajectory correction to the steering, should the driver not notice an obstacle. Other assistance systems include Active Lane Keeping Assistance, Advanced Driver Attention Alert and PEUGEOT Smartbeam Assistance.



Please consult the specification sheet to determine feature availability on your choice of model. Specifications may change without prior notice.

OUTSTANDING PRACTICALITY



INNOVATION

Please consult the specification sheet to determine feature availability on your choice of model. Specifications may change without prior notice.



AS IF BY MAGIC

Hands full? Watch the ingenious Smart electric tailgate* open and close, making it easy to load all your objects. All it takes is a swift foot motion under the bumper centre to activate it...and make life easier. This clever option also includes the innovative PEUGEOT Open and Go* system, a system that incorporates keyless entry and push-button start, relieving the need to remove the key from your pocket.



CREATE YOUR OWN SPACE

Create your own in-car space, at the single pull of the quick release lever (located in the boot), the rear seats fold to give a flat area for easy loading. With the rear seats folded the total storage volume grows to 1670 litres.



MAKE YOUR PRESENCE KNOWN

GT-LINE

Please consult the specification sheet to determine feature availability on your choice of model. Specifications may change without prior notice.



AN ICONIC GT LINE DESIGN

With the new PEUGEOT 3008 SUV GT Line you really can have the best of all worlds with sporty exterior styling and a choice of efficient engines. GT Line features a striking front end design with a chequered front grille and full LED headlights with sequential LED front indicators. To leave you in no doubt over its sporting potential, 'GT Line' badging stands proud on the front wings and rear. The 19" 'Washington' alloy wheels complete the look.

Please consult the specification sheet to determine feature availability on your choice of model. Specifications may change without prior notice.



EXPLORE WITH COMPLETE PEACE OF MIND

In addition the extensive safety features of the new PEUGEOT 3008 SUV, the GT Line benefits from the following additional driver assistance systems as standard:

- ABSD (Active Blind Spot Detection)
- LKA (Active Lane Keeping Assistance)
- DAA3 (Advanced Driver Attention Alert)
- PEUGEOT Smartbeam Assistance

THE EPITOME OF LUXURY

Climb aboard the new PEUGEOT 3008 SUV GT Line and experience new levels of luxury, from the full-grain leather trimmed steering wheel to the soft touch 'Brumeo' fabric that adorns the door cards and dashboard fascia, no detail has been overlooked. GT Line models benefit from strong levels of specification including 3D Connected Navigation, voice control and PEUGEOT i-Cockpit® Amplify. Inside styling enhancements abound, with Akinite copper stitch detailing throughout the cabin. The addition of Club leather seats completes the feeling of ultimate luxury.

Please consult the specification sheet to determine feature availability on your choice of model.
Specifications may change without prior notice.





2.0 HDi 110kW Stop & Start

FUEL	Diesel
GEARBOX	6 Speed Automatic
MAXIMUM TORQUE (Nm)	370 @ 2000 rpm
MAXIMUM POWER (kW)	110 @ 4000 rpm
COMBINED DRIVE CYCLE (litres / 100km)	5.0
CO ₂ EMISSIONS (g/km)	136

Please note figures above are for vehicles without Advanced Grip Control®. For full technical specification details please consult the new PEUGEOT 3008 SUV price and specification guide on peugeot.co.za



1.6 PureTech 121kW EAT6 Stop & Start

FUEL	Petrol
GEARBOX	6 Speed Automatic
MAXIMUM TORQUE (Nm)	240 @ 1400 rpm
MAXIMUM POWER (kW)	121 @ 6000 rpm
COMBINED DRIVE CYCLE (litres / 100km)	7.0
CO ₂ EMISSIONS (g/km)	156

Please note figures above are for vehicles without Advanced Grip Control®. For full technical specification details please consult the new PEUGEOT 3008 SUV price and specification guide on peugeot.co.za

DIESEL ENGINE

The new PEUGEOT 3008 SUV's diesel engines combine high performance and reduced emissions. With an exclusive combination of SCR (Selective Catalytic Reduction) and an additive DPF (Diesel Particulate Filter), PEUGEOT diesel engines reduce fuel consumption while restricting emissions, reducing the emission of nitrogen oxides (NOx) by up to 90% and eliminating 99.9% of fine particles.

PURETECH PETROL ENGINE

The new PEUGEOT 3008 SUV's 3-cylinder PureTech petrol engines are more efficient thanks to their reduced weight and size. They give you a unique driving pleasure and high-level performance, without compromising on reliability and robustness.



A TOUCH OF PERFECTION

From soft fabrics with intricate stitch detail to full grain leather trim, every seat material has been carefully chosen to provide style, durability and comfort.

- 1. Claudia Mistral Leather
- 2. Nappa Club Leather
- 3. Meco Cloth
- 4. Mistral 'Piedemonte' leather effect on Cloth

Please consult the specification sheet to determine feature availability on your choice of model. Specifications may change without prior notice.

SET THE TONE

Choose the colour that matches your character from the fourteen in our colour range.



Pyrite Beige (Metallic)



Bianca White (Matt)



Artense Grey (Metallic)



Smart Grey (Metallic)



Perla Nera (Metallic)



Sunset Copper (Metallic)



Magnetic Blue (Metallic)



Ultimate Red (Special Metallic)



Pearl White (Pearlescent)



Hurricane Grey (Matt)



Platinum Grey (Metallic)



Amazonite Grey/Nera Black (CF Metallic)



Nimbus Grey/Nera Black (CF Metallic)



Sunset Copper/Nera Black (CF Metallic)

CF - Coupe Franche dual-colour paint design

ROLL IN STYLE

Designed to complement the sharp exterior design, the new PEUGEOT 3008 SUV is available with a choice of alloy wheels in either painted or two-tone diamond-cut finishes.



17" 'CHICAGO' alloy



18" 'DETROIT' Two-tone diamond-cut alloy wheels



18" 'LOS ANGELES' Two-tone diamond-cut alloy wheels (linked to Advanced Grip Control®)



19" 'WASHINGTON' Two-tone diamond-cut alloy wheels



THE PEUGEOT CUSTOMER PROMISE

When purchasing a new Peugeot from an Authorised Peugeot Dealership, entrust your vehicle to one of our fully trained representatives equipped with all the relevant original diagnostic equipment. They promise to give you excellent after sales service backup, all at a competitive price.

Peugeot vehicles are designed and manufactured to give you worry-free motoring. As a Peugeot owner you are entitled to a comprehensive range of customer care services from your Authorised Peugeot dealer.

4 YR / 60,000 KM SERVICE PLAN* - up to four years of technical and financial peace of mind.

3 YR / 100,000 KM MANUFACTURER WARRANTY all vehicles will benefit from a 3 year / 100 000 km Manufacturer's Warranty.

3 YR / 100,000 KM ROAD-SIDE ASSISTANCE - You automatically receive Peugeot Assistance cover for three years of ownership. It includes roadside assistance, vehicle recovery and free car hire for 24 hours or one overnight hotel accommodation for up to 5 people, if more than 100 km from home. Peugeot Assistance is available within South Africa, Namibia, Botswana, Swaziland and Lesotho. Your local Peugeot Dealer has full details of the terms and conditions.

12 YEAR ANTI-PERFORATION AND 3 YEAR PAINT WARRANTY

Is automatically transferable on the sale of the vehicle, which will maintain and enhance the resale value of your vehicle.

CALL CENTRE

To make sure we meet and exceed your service expectations, please contact the Peugeot Call Centre on 0860 738 472.

* The **4 Yr / 60,000 km Service Plan** is valid from the 1st of January 2016 for passenger vehicles retailed in South Africa, Botswana and Namibia.

ABOUT THIS BROCHURE

The information contained in this brochure is based on the data and images available at the time of printing. Some features may not be available in South Africa and some photography may feature left hand drive models. As part of a policy of continuous specification improvement, Peugeot reserves the right to modify specifications, options and colours at any time. For full details ask your Peugeot Dealer, or visit www.peugeot.co.za. Print and photographic processes used in this brochure may alter the depth and tone of the colours shown.

The brochure is not a contractual document or offer of sale

The details in this brochure cannot be reproduced without the expressed authorisation of Peugeot

Issued by Sales and Marketing. Peugeot Citroën South Africa, Homestead Place, Corner 12th Avenue and Homestead Lane, Rivonia, Sandton, 2128

Vehicle specifications depend on model and may change without prior notice. Please refer to specification sheet. Visuals for illustration purpose only. E&OE



PEUGEOT
ASSISTANCE
0860 77 2424

www.peugeot.co.za

07/2018



PEUGEOT